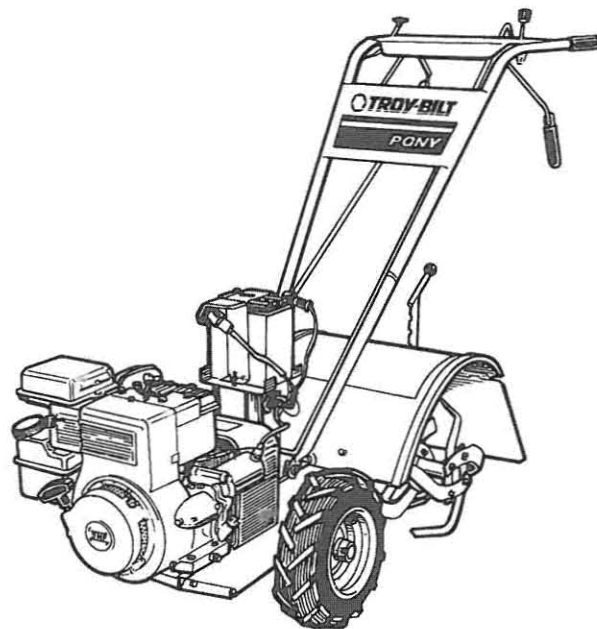


TROY-BILT™

Parts Catalog

PONY® Tiller



How To Find Your Tiller's Serial Number

If you ever need replacement parts for your new tiller and require any assistance or help in selecting parts or installing them, we need to know the Serial Number of your tiller when you write to us or call. The Serial Number on your tiller is located on top of the transmission housing (see photo at right for location.)

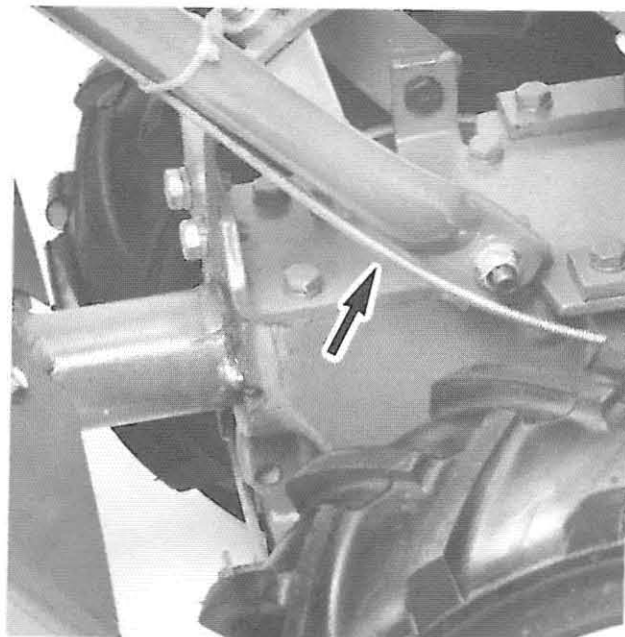


TABLE OF CONTENTS

TILLER ASSEMBLIES BY GROUPS	pages 2 thru 19
Locating Tiller Serial Number	inside front cover
How To Use This Catalog	page 1
HANDLEBAR ASSEMBLY & CONTROL LEVERS	page 2
HOOD, BRACKET & DEPTH REGULATOR	page 4
ENGINE & SUPPORT BRACKETS, ENGINE PULLEYS, BELTS, BELT COVER	page 6
FORWARD/REVERSE IDLER AND SHIFT ASSEMBLY ...	page 8
BOLO TINES, WHEELS	page 10
TRANSMISSION ASSEMBLIES	pages 12 thru 17
Transmission Housing, Covers, Seals, Gaskets & Plugs	page 12
Main Drive Shaft Assembly	page 14
Transmission Drive Pulley, Input Pinion Shaft & Gear Assembly	page 14
Wheel Shaft Assembly & Clutch Eccentric Shaft Assembly	page 16
Tiller Shaft Assembly	page 16
ELECTRIC START ASSEMBLY	page 18
ATTACHMENTS	pages 20 thru 23
NUMERICAL INDEX	page 24 & inside back cover

HELPFUL INFORMATION FOR USERS OF THIS PARTS CATALOG

This Parts Catalog covers only the PONY® Model TROY-BILT Roto Tiller-Power Composter, built by Troy-Bilt Manufacturing Company.

Parts for your tiller may be ordered from your local servicing dealer or directly from us (see factory address and telephone information below).

When ordering parts the following information is required:

1. The SERIAL NUMBER of your tiller.
2. The PART NUMBER (not the Index No.) of the part.
3. The PART DESCRIPTION.
4. The QUANTITY needed.

HOW TO USE THIS CATALOG

To find a part, locate the page number of the illustration or sketch of the part you seek in the Table of Contents. Note that some parts may be shown on more than one illustration because they are also used on other assemblies in your tiller.

Each illustrated part has an Index Number right next to it. This Index Number also appears in the first column of the parts list opposite the illustration. The second column of the parts list shows the part number given to that particular part. **It is these numbers, the part numbers in the second column, that should be used to order replacement parts.**

The third column of the parts list generally uses a single word to describe the part, then

gives additional descriptive information. Where we think it will be extra helpful to you, we have often identified where the part fits, or what it does in the assembly.

The fourth column of the parts list shows how many of each part is used in the assembly. If a part is used more than once on the tiller, you can determine how many times and where on the tiller by looking at the Numerical Index of parts in the back of the catalog. This shows the page and index numbers of all the assemblies using that part. Thus, if you know the part number but do not know its name, location, or use, the Numerical Index in the back will refer directly to the proper illustration and part description.

PLEASE NOTE

Some replacement parts that you receive may vary slightly in shape, color, or texture from the original parts. This is because certain parts are supplied to us by more than one manufacturer. Please be assured, however, that all parts must conform to our rigid quality specifications, and any slight variations will not affect the fit or performance of these parts in your tiller.

IMPORTANT: Left and right sides of tiller are determined by standing in the operator position and facing the direction of forward travel.

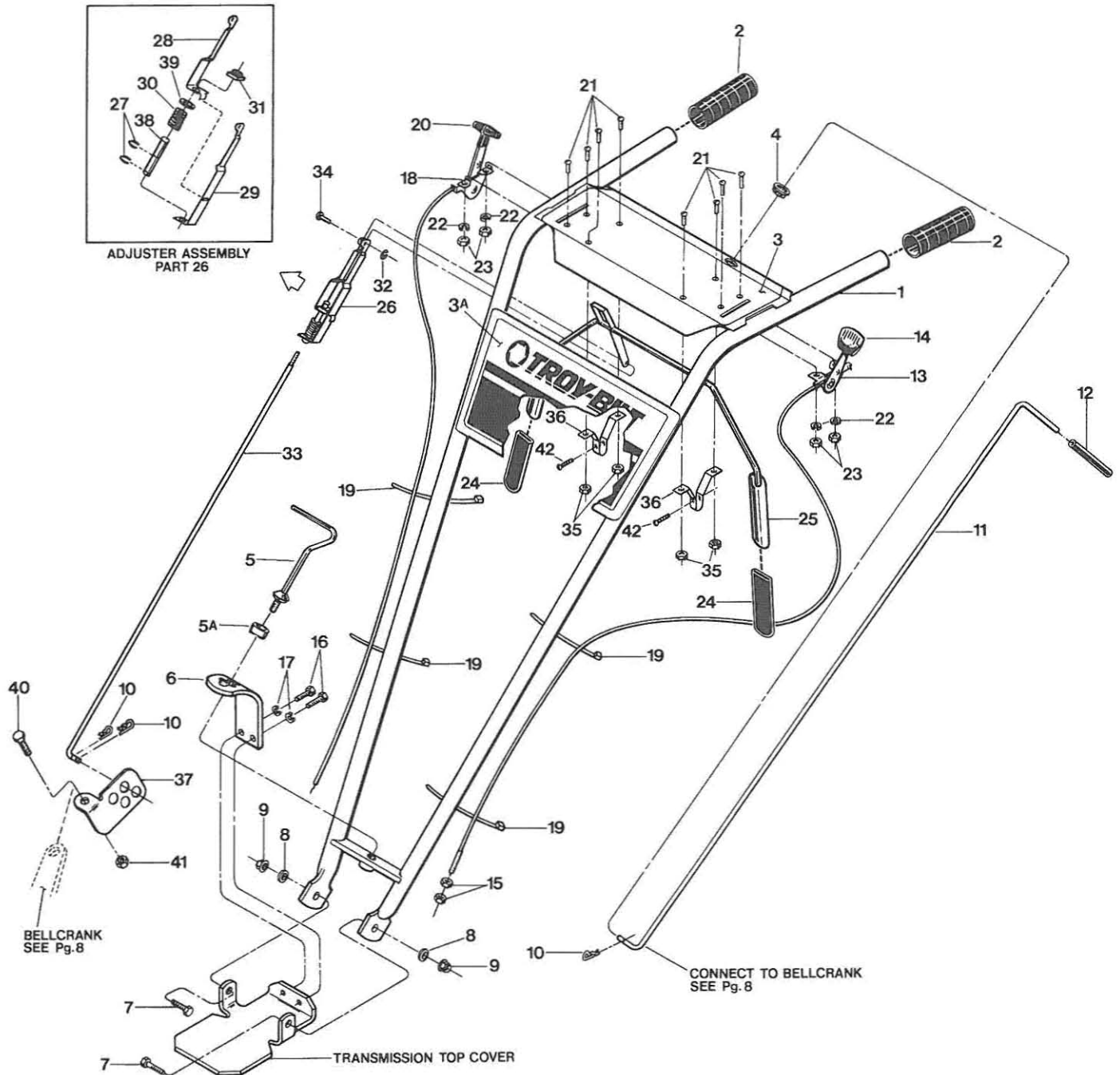
TROY-BILT MANUFACTURING COMPANY

102nd Street and 9th Avenue, Troy, New York 12180
For Technical Service, call Toll-Free: 1-800-833-6990
For Parts, call Toll-Free: 1-800-648-6776

GARDEN WAY CANADA, INC.

1515 Matheson Blvd., Unit B11; Mississauga, Ontario L4W 2P5
(Local only — 416 area code: 624-8423)
(From Ontario & Quebec: 1-800-387-3351)
(From western Canada and the Maritime Provinces: 1-800-387-3316)

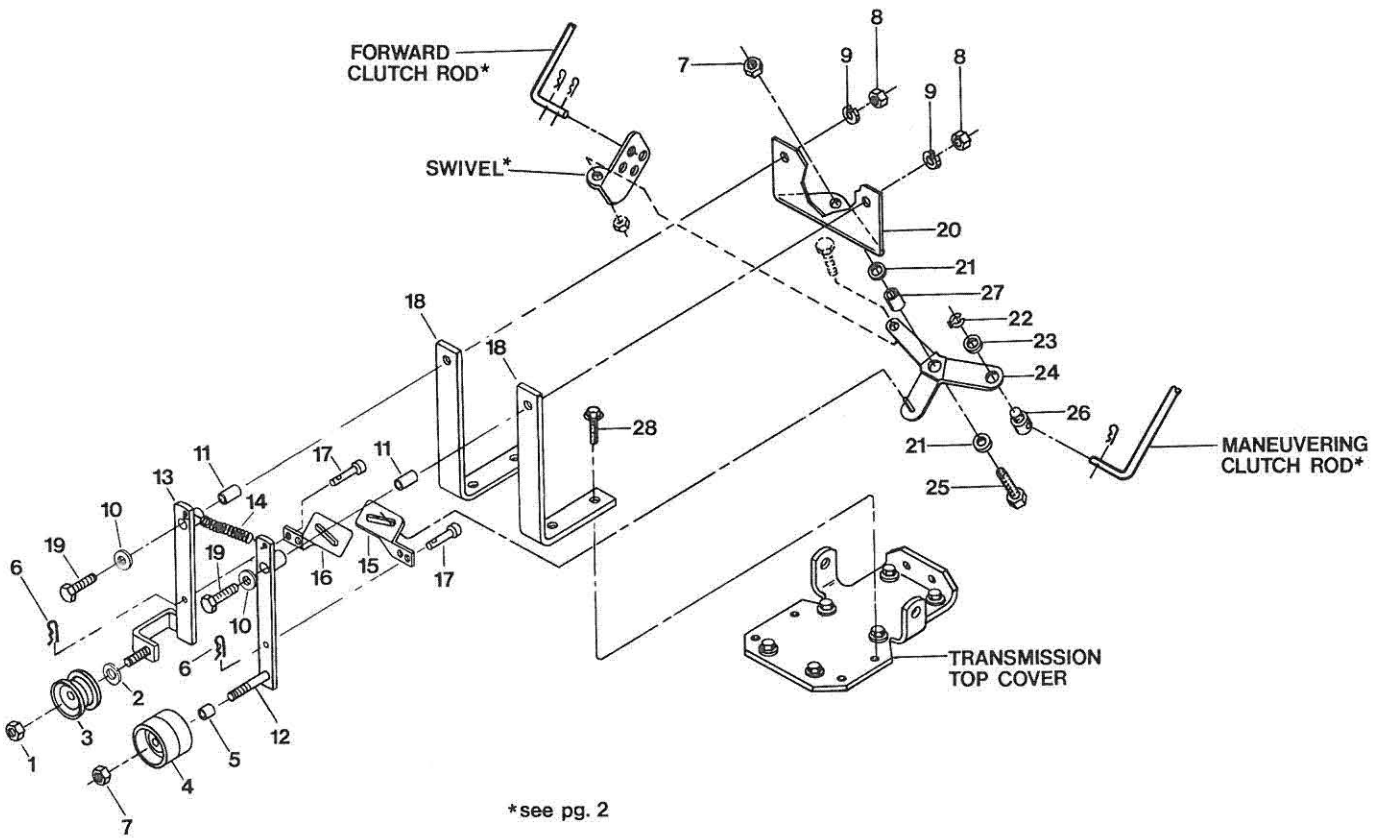
HANDLEBAR ASSEMBLY & CONTROL LEVERS



INDEX NO.	PART NO.	DESCRIPTION	NO. REQ'D
HANDLEBAR ASSEMBLY & CONTROL LEVERS			
1	20928	HANDLEBARS — (incl. Index No.'s 2, 3, 3A, 4)	1
2	9126	GRIP — handlebars	2
3	1900357	DECAL — for operator control panel	1
3A	20924	DECAL — Troy-Bilt Pony (model name, logo)	1
4	9251	GROMMET — plastic (part of operator control panel)	1
5	20703	HANDLE, HEIGHT ADJUSTMENT — regulates handlebar height adjustment	1
5A	9955	WASHER — keyed	1
6	1900475010	BRACKET — handlebar height adjustment	1
7	9711	SCREW — hex hd., $\frac{3}{8}$ "-16 x 1", Grade 5 (used to attach handlebars to tabs on transmission top cover)	2
8	9904	WASHER — plain (flat), $\frac{3}{8}$ ", S.A.E. (handlebar attachment)	2
9	9837	LOCKNUT — hex, $\frac{3}{8}$ "-16 (handlebar attachment)	2
10	9338	HAIR PIN COTTER — (connects Maneuvering Clutch Lever and Forward Clutch Lever to the Shift Mechanism)	3
11	20830	MANEUVERING CLUTCH LEVER — complete (incl. grip, #9198)	1
12	9198	GRIP — Maneuvering Clutch Lever	1
13	9442	WHEEL GEAR CONTROL & CABLE ASSY. (includes Index No.'s 14, 15, 19, 21, 22, 23)	1
14	9057	KNOB — Wheel Gear Control Lever	1
15	9826	NUT — hex, $\frac{5}{8}$ "-24, Wheel Gear cable adjustment	2
16	9709	SCREW — hex hd., $\frac{3}{8}$ "-16 x $\frac{3}{4}$ " (used to attach handlebar height adjustment bracket to transmission top cover)	2
17	9913	LOCKWASHER — $\frac{3}{8}$ " (to attach handlebar height adjustment bracket to transmission top cover)	2
18	9440	ENGINE THROTTLE CONTROL & CABLE	1
19	9202	TIES — plastic (to secure cables to handlebars)	4
20	9212	KNOB — throttle control lever	1
21	9722	SCREW — round head, No. 10-32 x $\frac{1}{2}$ "	8
22	9909	LOCKWASHER — No. 10	2
23	9809	NUT — hex, No. 10-32	4
24	9390	GRIP — paddle	2
25	20863	BAIL — Forward Clutch Control (Incl. two Grips, Index No. 24)	1
26	20862	ADJUSTER ASSEMBLY — (Incl. Index No.'s 27, 28, 29, 30, 38, and 39)	1
27	9532	KLIP RING	2
28	20808	ADJUSTER, RIGHT SIDE	1
29	20809	ADJUSTER, LEFT SIDE	1
30	9059	SPRING — Adjuster	1
31	9522	NUT — rectangular	1
32	9386	KLIP RING	1
33	20831	ROD — Forward Clutch	1
34	97083	PIN — clevis	2
35	9853	SEMS NUT	4
36	20806	BRACKET — bail support	2
37	20888	SWIVEL	1
38	9432	BUSHING	1
39	9973	WASHER	1
40	90070	SCREW — hex hd., $\frac{1}{4}$ "-20 x $\frac{3}{4}$ "	1
41	9811	NUT — $\frac{1}{4}$ "-20	1
42	9552	SCREW — flanged hex hd., self-tapping, $\frac{1}{4}$ "-20 x $\frac{1}{2}$ "	2

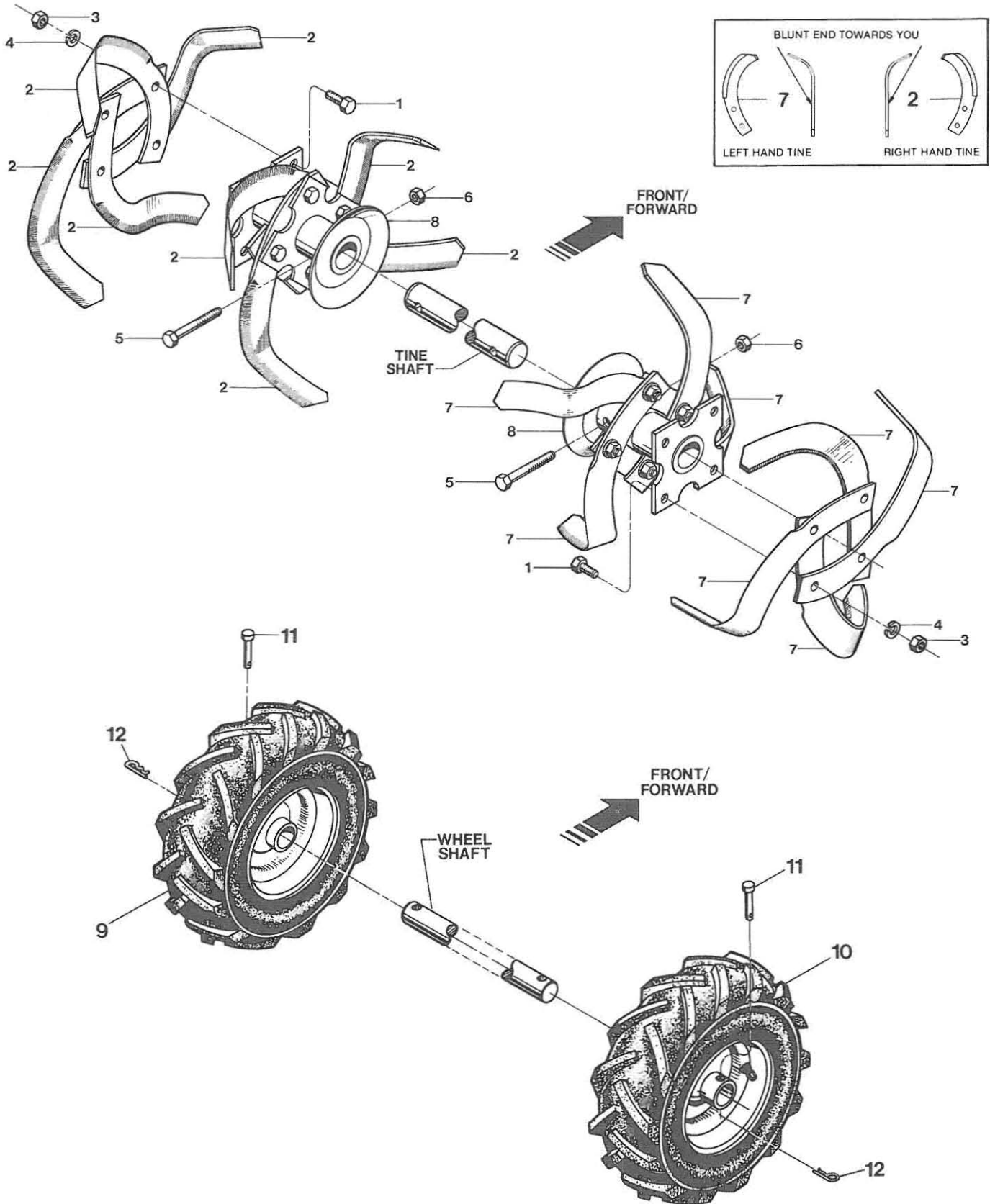
INDEX NO.	PART NO.	DESCRIPTION	NO. REQ'D
HOOD, BRACKET & DEPTH REGULATOR			
1	20861	HOOD — tine cover, with hinged flap (Incl. Index No. 17)	1
2	9913	LOCKWASHER — $\frac{3}{8}$ "	2
3	2527	BRACKET — hood & depth regulator (Incl. Index No. 9)	1
4	90038	SCREW — flanged hex hd., $\frac{5}{16}$ "-18 x $\frac{5}{8}$ "	2
5	9811	LOCKNUT — hex, $\frac{1}{4}$ "-20	1
6	9734	SCREW — hex hd., $\frac{1}{4}$ "-20 x 1"	1
7	9384	SPRING — depth regulator plunger	1
8	9438	SPACER	1
9	9308	ROLL PIN — $\frac{1}{4}$ " x 1" (spiral)	1
10	1117A	BAR ASSEMBLY — depth adjustment (incl. Index No's. 11 and 12) . . .	1
11	9120	RING — retaining, tolerance ring	1
12	9119	KNOB — depth regulator (Incl. Index No. 11)	1
13	9712	SCREW — hex hd., $\frac{3}{8}$ "-16 x $1\frac{1}{4}$ "	2
14	1113-1	BUSHING — spacer, drag bar	2
15	9802	NUT — hex, $\frac{3}{8}$ "-16	2
16	20775	DRAG BAR — depth regulator	1
17	20925	DECAL — tiller operation instructions	1
18	9553	SCREW — hex head, $\frac{5}{16}$ "-18 x $\frac{1}{2}$ " self-tapping	2
19	9552	SCREW — flanged hex head, $\frac{1}{4}$ "-20 x $\frac{1}{2}$ " self-tapping (attaches hood to depth regulator bracket)	2

FORWARD/REVERSE IDLER ASSEMBLY



INDEX NO.	PART NO.	DESCRIPTION	NO. REQ'D
FORWARD/REVERSE IDLER ASSEMBLY			
1	9837	LOCKNUT — hex, $\frac{3}{8}$ "-16	1
2	20513	BUSHING — reverse idler pulley	1
3	9460	PULLEY — idler, reverse tiller direction	1
4	9090	PULLEY — idler, forward tiller direction	1
5	9091	SPACER	1
6	9338	HAIRPIN COTTER	2
7	9807	LOCKNUT — hex, $\frac{3}{8}$ "-16	2
8	9801	NUT — hex, $\frac{5}{16}$ "-18	2
9	9912	LOCKWASHER — $\frac{5}{16}$ "	2
10	20545	WASHER — plain, $\frac{5}{16}$ "	2
11	9479	PIVOT BUSHING	2
12	20899	IDLER ARM — left, forward tiller direction	1
13	20760	IDLER ARM — right, reverse tiller direction	1
14	1492	SPRING	1
15	20517-01	FORWARD LINK	1
16	20517-02	REVERSE LINK	1
17	9340	PIN	2
18	20751	MOUNTING BAR	2
19	9966	SCREW — hex hd., $\frac{5}{16}$ "-18 x $2\frac{1}{4}$ ", Grade 5	2
20	20842	SHIFTING BASE	1
21	20553	SPACER — bushing	2
22	9532	KLIP RING	1
23	20546	WASHER — pivot	1
24	20838	BELLCRANK	1
25	9712	SCREW — hex hd., $\frac{3}{8}$ "-16 x $1\frac{1}{4}$ "	1
26	20506	PIVOT — for Maneuvering Clutch Lever	1
27	20532	BUSHING — bellcrank	1
28	90045	SCREW — flanged hex hd., $\frac{5}{16}$ "-18 x 1"	4

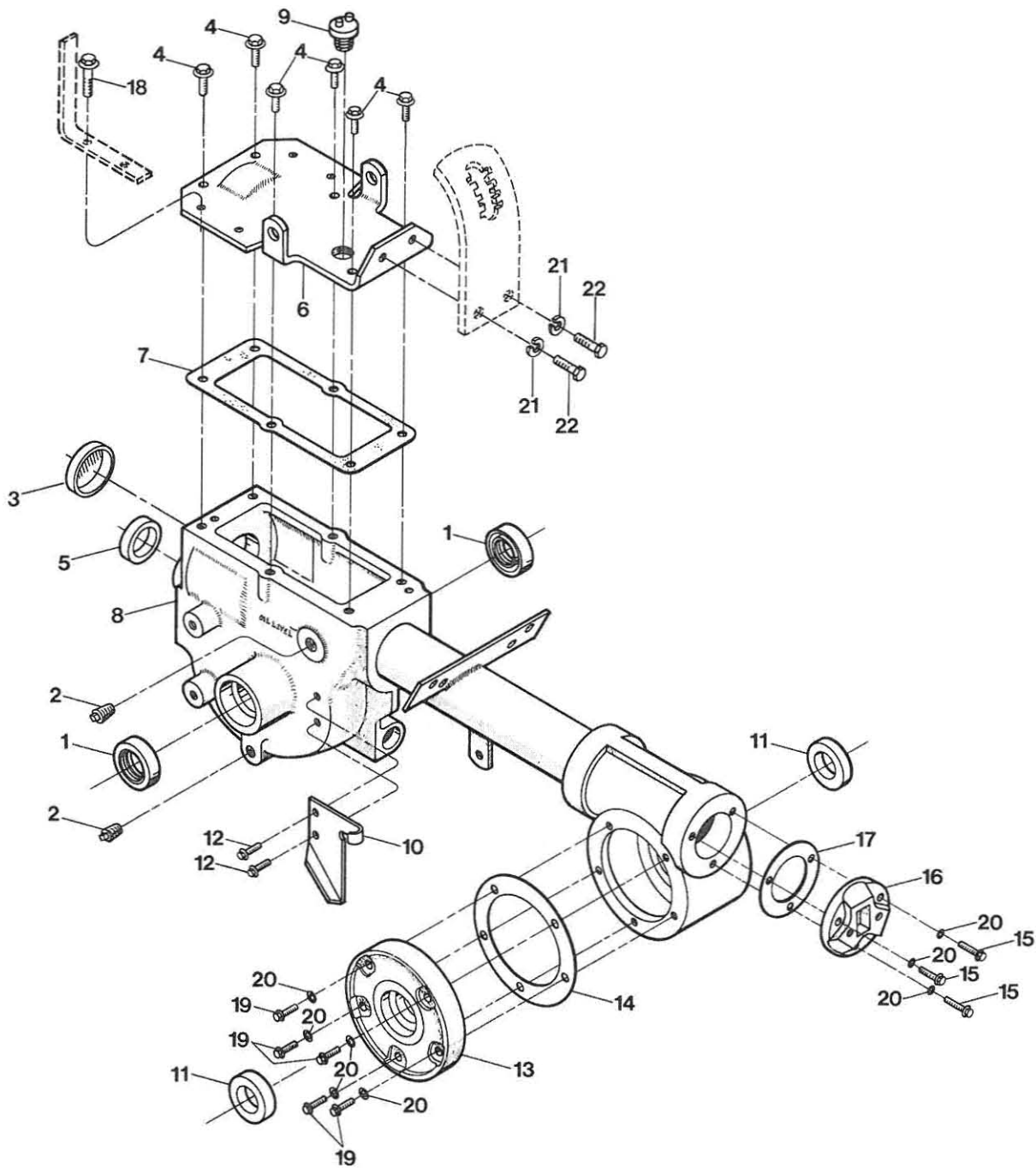
BOLO TINES, WHEELS



INDEX NO.	PART NO.	DESCRIPTION	NO. REQ'D
BOLO TINES, WHEELS			
1	9711	SCREW— hex hd., $\frac{3}{8}$ "-16 x 1", Grade 5	16
2	1270-2A	BOLO TINE— single, RIGHT HAND tine used on left side of tiller (Incl. two each of Index No.'s 1, 3 and 4)	8
3	9802	NUT— hex, $\frac{3}{8}$ "-16	16
4	9913	LOCKWASHER— $\frac{3}{8}$ "	16
5	9761	SCREW— hex head, $\frac{3}{8}$ "-16 x 2", Grade 8	2
6	9807	LOCKNUT— hex, $\frac{3}{8}$ "-16	2
7	1270-1A	BOLO TINE— single, LEFT HAND tine used on right side of tiller (Incl. two each of Index No.'s 1, 3 and 4)	8
8	20770	TINE HOLDER— for bolo tines, left and right sides	2
....	1901118	REPLACEMENT SET OF 16 BOLO TINES — Includes eight each of right hand and left hand tines, and sixteen each of Index No.'s 1, 3 and 4)	1
CUSTOM TILLING TINES (EXTRA LONG WEARING)			
Special hard faced tines that are thicker than standard tines for use in sandy, gritty soil, when custom tilling or market gardening.			
10802	CUSTOM TILLING TINE KIT — (Incl. 8 #2475-1 bolo tines, 8 #2475-2 bolo tines, 16 #9711 bolts, and 16 #9807 locknuts)		1
2475-1	BOLO TINE, CUSTOM TILLING, LEFT HAND		8
2475-2	BOLO TINE, CUSTOM TILLING, RIGHT HAND		8
9807	LOCKNUT — Hex $\frac{3}{8}$ " — used in place of Item No.'s 3 and 4 when using Custom Tilling Tine Kit		16
9	20918-01	WHEEL & TIRE ASSEMBLY— left side, 4.10 x 6" tire mounted on 6" gray wheel, tubeless pneumatic (10-20 lbs. air required), tractor- tread.	1
10	20918-02	WHEEL & TIRE ASSEMBLY— right side, same specs. as above.	1
11	9380	CLEVIS PIN — .312" x $1\frac{1}{4}$ " long	2
12	9338	HITCH PIN	2

IMPORTANT: Left and right sides of tiller are determined by standing in the operator position and facing the direction of forward travel.

TRANSMISSION HOUSING, COVERS, SEALS, GASKETS & PLUGS



INDEX NO.	PART NO.	DESCRIPTION	NO. REQ'D
TRANSMISSION HOUSING, COVERS, SEALS, GASKETS, & PLUGS			
1	9621	OIL SEAL — double lip, wheel shaft, right and left sides	2
2	9726	PLUG — pipe, 1/4", oil level hole and gear oil drain hole	2
3	97076	SEAL — transmission bore	1
4	90044	SCREW — flanged hex hd., 5/16"-18 x 3/4"	6
5	85030	OIL SEAL — input pinion shaft, front of transmission	1
6	11513	COVER — top of transmission (Incl. four of Index No. 18 and two each of Index No.'s 21 and 22)	1
7	20694	GASKET — transmission top cover	1
8	20893	TRANSMISSION CASE, TUBE & REAR HOUSING ASSEMBLY	1
9	9467	PLUG — for gear oil fill hole on transmission cover	1
10	20889	PLATE — wheel drive cable mounting	1
11	97073	OIL SEAL — tiller shaft, left and right sides	2
12	90038	SCREW — flanged hex hd., 5/16"-18 x 5/8"	2
13	20873	COVER — tiller housing, left side (Incl. five screws, Index No. 19)	1
14	1129-1	GASKET — tiller housing cover, .010" thick (fits all covers)	as req'd.
15	9773	SCREW — flanged hex hd., 1/4"-20 x 7/8"	3
16	1115	CAP — rear bearing	1
17	1124-2	GASKET — rear bearing cap, .010" thick	as req'd.
18	90045	SCREW — flanged hex hd., 5/16"-18 x 1"	4
19	9780	SCREW — flanged hex hd., 1/4"-20 x 5/8"	5
20	WASHER — Nylon. Not reusable (if screws with these washers are removed, discard washers, then apply non-hardening gasket sealant to the screw threads and replace the screws securely)	
21	9913	LOCKWASHER — 3/8"	2
22	9709	SCREW — hex hd., 3/8"-16 x 3/4"	2

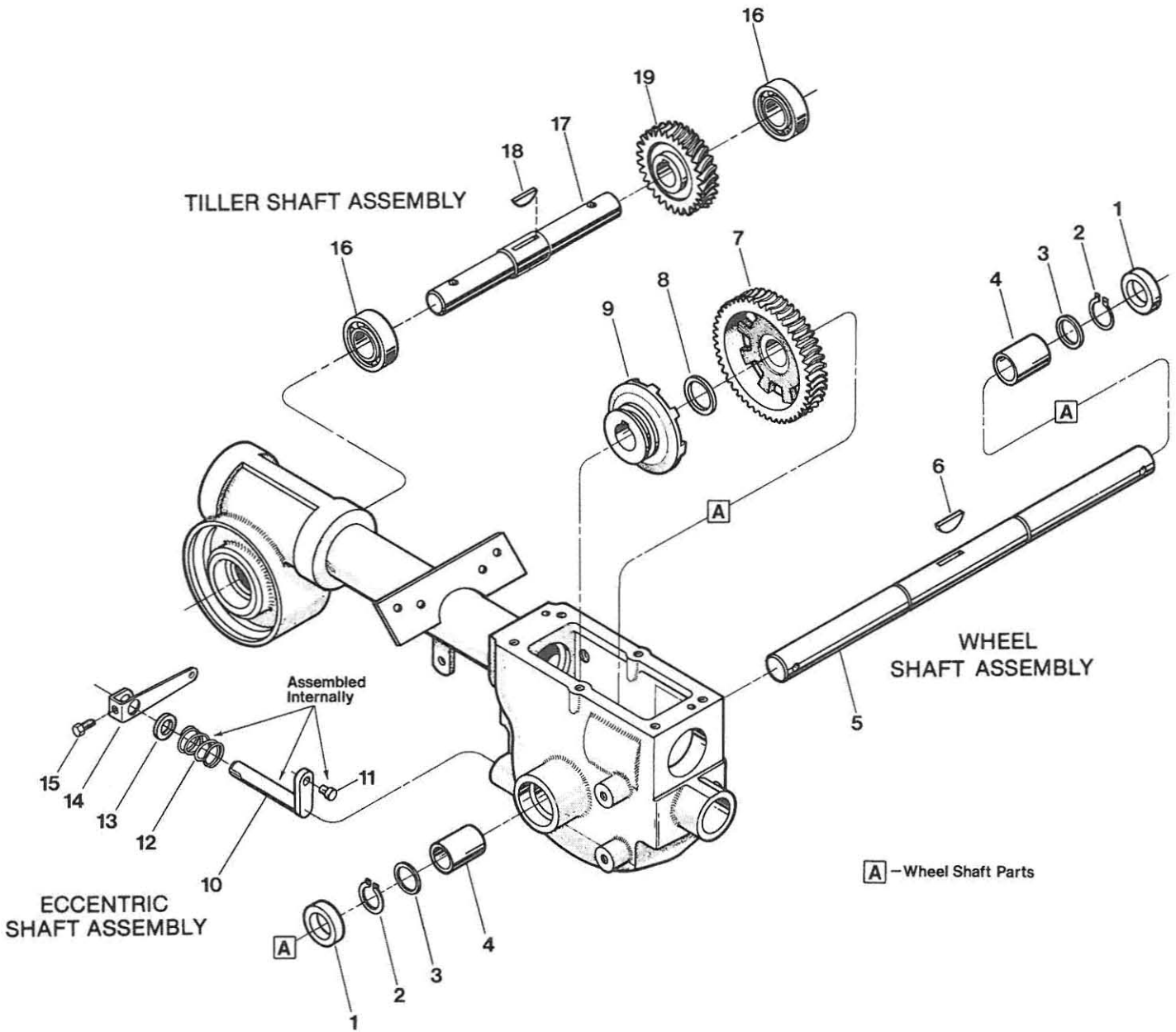
INDEX NO.	PART NO.	DESCRIPTION	NO. REQ'D
DRIVE SHAFT			
1	1714	BEARING — tapered roller with race (front of drive shaft)	1
2	20718	GEAR — spur, main drive shaft	1
3	9301	KEY — $\frac{3}{16}$ " sq. x 1"	1
4	10360	DRIVE SHAFT — inertia welded shaft with welded, single-lead hardened steel worm at front to drive the wheel worm gear, and welded six-lead hardened steel worm at rear to drive the tiller gear (also includes pressed-on #1714 rear roller bearing, race for bearing, and #9301 key)	1
5	1224-1	SHIM — rear bearing cap, .010" thick (see Note 1 below)	as req'd.
5	1224-2	SHIM — same as above, but .030" thick (see Note 1)	as req'd.
5	1224-3	SHIM — same as above, but .005" thick (see Note 1)	as req'd.
....	1325C	SHIM SET — includes the following shims: two #1224-1; two #1224-2; one #1224-3	as req'd.

NOTE 1 — Shim between drive shaft rear bearing and rear bearing cap to achieve 5-to-10 thousandths of an inch (.005"-0.010") end play on drive shaft.

INPUT PINION SHAFT & GEAR ASSEMBLIES

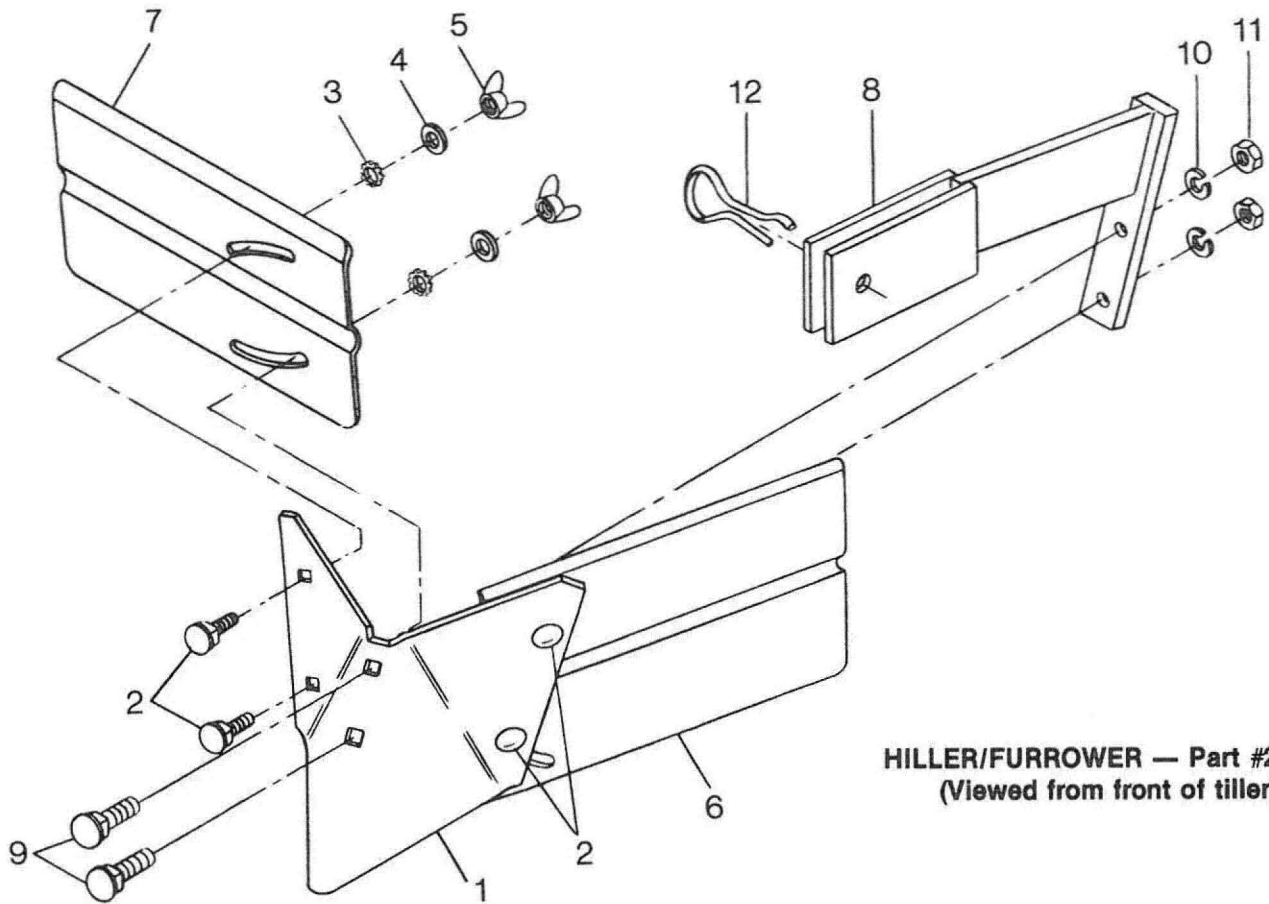
6	9655	SCREW — hex hd., $\frac{5}{16}$ "-24 x $\frac{3}{4}$ ", Grade 5	1
7	9944	WASHER — disc spring (concave surface faces pulley)	1
8	9301	KEY — $\frac{3}{16}$ " sq. x 1"	1
9	20880	PULLEY — transmission drive	1
10	1440	WASHER — support	2
11	85030	OIL SEAL — input pinion shaft, front	1
12	9500	RING — retaining (snap ring), external	1
13	9953	WASHER — thrust	2
14	9428	BUSHING	1
15	9677	SET SCREW — $\frac{5}{16}$ "-18 x $\frac{3}{8}$ "	1
16	20791	INPUT PINION — steel shaft	1
17	20792	GEAR — input pinion	1
18	9093	RETAINER — snap ring, external	1
19	20799	PINION ASSEMBLY — Includes one each of Index No.'s 16, 17 and 18	as req'd.
20	9517	RETAINER — snap ring, internal	1
21	94018	WASHER — sheave shoulder	1

WHEEL SHAFT, ECCENTRIC SHAFT & TILLER SHAFT ASSEMBLIES



INDEX NO.	PART NO.	DESCRIPTION	NO. REQ'D
WHEEL SHAFT, ECCENTRIC SHAFT & TILLER SHAFT ASSEMBLIES			
1	9621	OIL SEAL — left and right sides	2
2	9511	RING — retaining, heavy-duty, external	2
3	1166-1	SHIM — 1 $\frac{1}{64}$ " I.D., .062" thick	as req'd.
....	1166-2	SHIM — as above, only .030" thick	as req'd.
....	1166-3	SHIM — as above, only .015" thick	as req'd.
....	1166-4	SHIM — as above, only .010" thick	as req'd.
4	1086	BUSHING —	2
5	20711	WHEEL SHAFT (Axle) — Incl. Index No. 6	1
6	9373	KEY — Hi-Pro ($\frac{1}{4}$ " x 1 $\frac{5}{16}$ "), clutch to wheel shaft	1
7	20535	GEAR — wheel drive (worm gear), cast iron	1
8	9935	SHIM — between key and gear (1.016" I.D. x 1.468" O.D. x .062" thick) .	1
9	20712	CLUTCH — wheel drive, cast iron	1
10	20879	ECCENTRIC SHAFT — wheel clutch shifting	1
11	1442	PIN — eccentric shaft	1
12	9055	SPRING —	1
13	9622	OIL SEAL — eccentric shaft	1
14	20757	LEVER — eccentric shaft	1
15	9743	SCREW — hex hd., $\frac{1}{4}$ "-20 x $\frac{1}{2}$ "	1
16	97074	BALL BEARING — for tiller shaft	2
17	20896	TILLER SHAFT — Incl. Index No. 18	1
18	1104	KEY — woodruff, $\frac{1}{4}$ " x 1 $\frac{1}{4}$ ", for tiller shaft/worm gear	1
19	20776	WORM GEAR — bronze, tiller drive	1

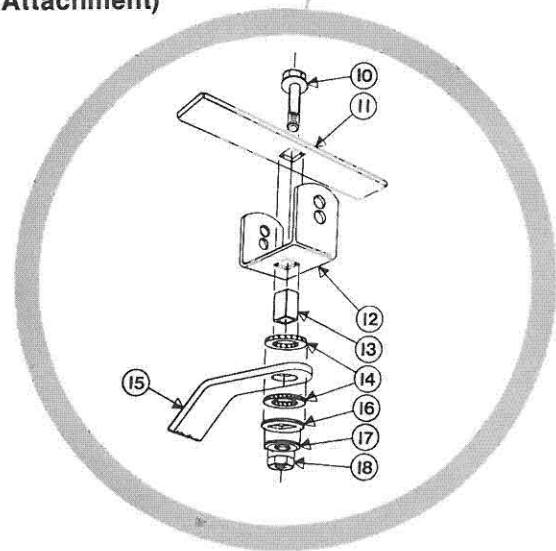
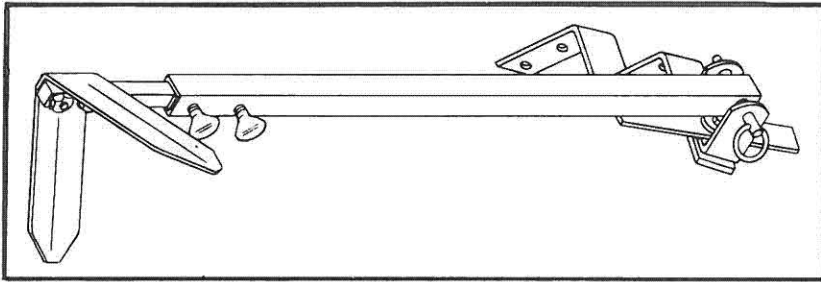
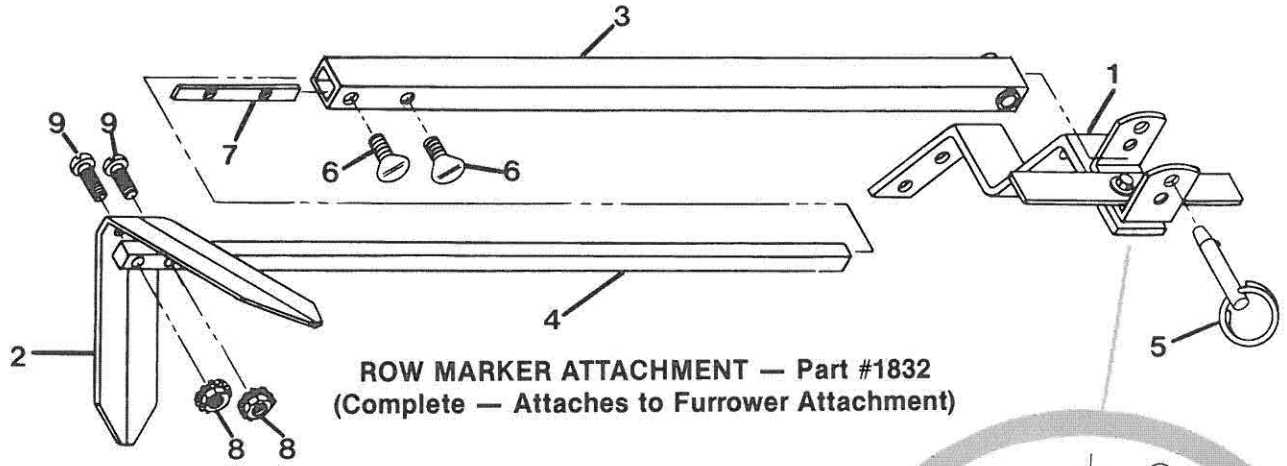
HILLER/FURROWER ATTACHMENT



HILLER/FURROWER — Part #20868
(Viewed from front of tiller)

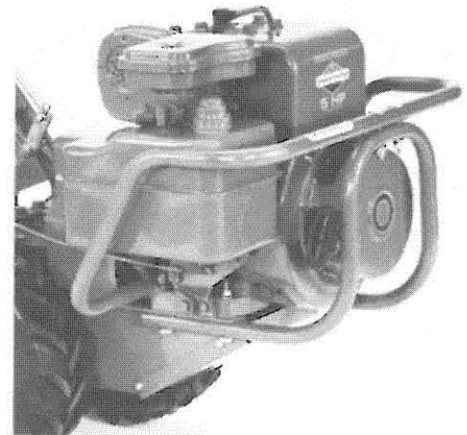
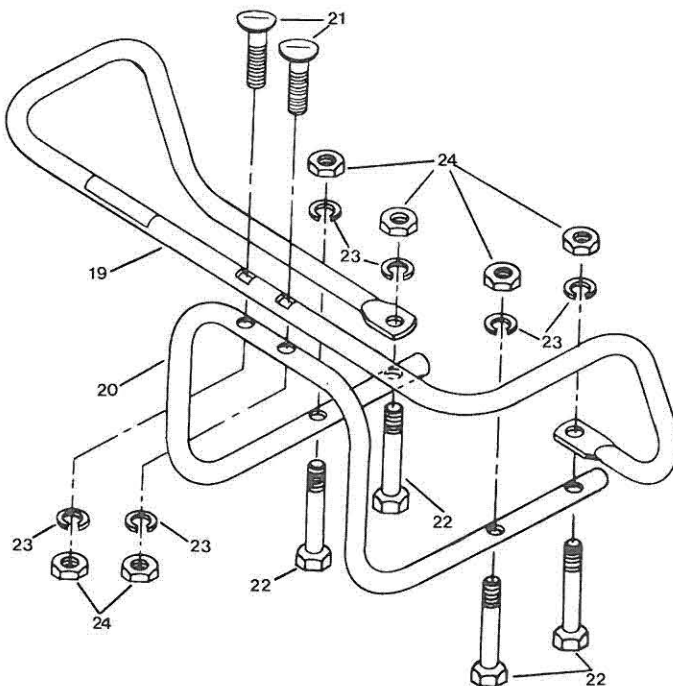
INDEX NO.	PART NO.	DESCRIPTION	NO. REQ'D
HILLER/FURROWER — Part #20868 COMPLETE ATTACHMENT			
1	2735	FURROWER — blade only	1
2	9765	CARRIAGE BOLT — $\frac{5}{16}$ "-18 x $\frac{3}{4}$ "	4
3	9919	STAR WASHER — external tooth, $\frac{5}{16}$ "	4
4	9902	PLAIN WASHER — $\frac{5}{16}$ " S.A.E.	4
5	9824	WING NUT — $\frac{5}{16}$ "-18	4
6	20932-01	HILLER WING — left	1
7	20932-02	HILLER WING — right	1
8	1197	BRACKET — blade mounting	1
9	9725	CARRIAGE BOLT — blade mounting, $\frac{3}{8}$ "-16 x $1\frac{1}{2}$ "	2
10	9913	LOCKWASHER — $\frac{3}{8}$ ", plated	2
11	9802	NUT — hex, $\frac{3}{8}$ "-16, plated	2
12	9318	PIN — clinch	1
....	20868	HILLER/FURROWER — complete attachment (owner must bolt blade to mounting bracket, and wings to blade). Instructions included	1

ROW MARKER ATTACHMENT



Main Support/Yoke Assembly

BUMPER ATTACHMENT

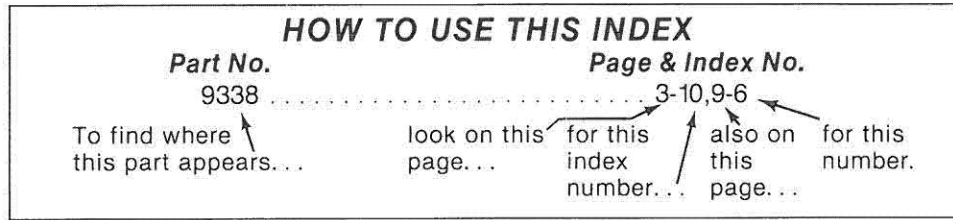


BUMPER ATTACHMENT PART #1875
(Viewed from front of tiller)

INDEX NO.	PART NO.	DESCRIPTION	NO. REQ'D
ROW MARKER ATTACHMENT — Part #1832			
(Complete — Attaches to Furrower Attachment			
1	1569	MAIN SUPPORT & YOKE ASSEMBLY — complete. Incl. Index No's. 10, 11, 12, 13, 14, 15, 16, 17, 18	1
2	1594	MARKER BLADE — blade only	1
3	1597	MARKER ARM — main arm	1
4	1570	MARKER ARM — extension arm w/stop pin	1
5	9347	HITCH PIN — (included in Hardware Package #1837)	1
6	9786	THUMBSCREW — ¼" - 20 x ½", not avail. sep. (see Hardware Package #1837)	2
7	1596	NUT BAR — (included in Hardware Package #1837)	1
8	9828	NUT — hex, 10-24 with attached star washers, not avail. sep. (see Hardware Pkg. #1837)	2
9	9721	SCREW — round hd., 10-24 x 1", not avail. sep. (see Hardware Package #1837)	2
....	1837	HARDWARE PACKAGE — includes: one #9347 Hitch Pin (Index 5), two #9786 Thumbscrews (Index 6), one #1596 Nut Bar (Index 7), two #9828 Hex Nuts (Index 8), two #9721 Screws (Index 9)	1
....	1851	ROW MARKER ATTACHMENT & PONY HILLER/FURROWER ATTACHMENT COMBINATION — complete: includes #20868 Pony Hiller/Furrower and #1832 Row Marker	1
ROW MARKER MAIN SUPPORT & YOKE ASSEMBLY — Part #1569			
10	9784	BOLT — whiz lock, ⅝" - 16 x 1½"	1
11	1593	STOP BAR	1
12	1592	YOKE	1
13	1591	TUBE KEY — square	1
14	1590	WASHER — friction	2
15	1588	MAIN SUPPORT	1
16	1589	WASHER — square hole	1
17	9925	WASHER — disc spring	1
18	9802	NUT — hex, ⅝" - 16	1
BUMPER ATTACHMENT — Part #1875			
19	20665	BUMPER — top section	1
20	20666	BUMPER — bottom section	1
21	9795	BOLT — curved head, ⅝" - 18 x 2" (special bolt); also see #1874 Hardware Kit)	2
22	9557	BOLT — hex hd., ⅝" - 18 x 2½", not avail. sep. (order #1874 Hardware Kit)	4
23	9912	LOCKWASHER — ⅝", not avail. sep. (order #1874 Hardware Kit)	6
24	9801	NUT — hex, ⅝" - 18, not avail. sep. (order #1874 Hardware Kit)	6
....	1874	HARDWARE KIT — includes: two #9795 curved head bolts; four #9557 hex hd. bolts; six #9912 lockwashers; six #9801 hex nuts	1
....	1875	BUMPER ATTACHMENT — complete attachment with mounting instructions included	1

Note: Common hardware listed above as "not available separately" can be easily found at most good, local hardware stores.

NUMERICAL INDEX



Part No.	Page & Index No.	Part No.	Page & Index No.	Part No.	Page & Index No.
1086	17-4	9057	3-14	9557	23-22
1104	17-18	9059	3-30	9561	7-12
1113-1	5-14	9090	9-4	9566	19-18
1115	13-16	9091	9-5	9573	7-22
1117A	5-10	9093	15-18	9621	13-1, 17-1
1124-2	13-17	9119	5-12	9622	17-13
1129-1	13-14	9120	5-11	9655	7-16, 15-6
1138-2	7-20	9126	3-2	9677	15-15
1166-1	17-3	9198	3-12	9709	3-16, 13-22
1166-2	17	9202	3-19	9711	3-7, 11-1
1166-3	17	9212	3-20	9712	5-13, 9-25
1166-4	17	9218	19-28	9721	23-9
1197	21-8	9224	19-5	9722	3-21
1224-1	15-5	9248	19-2A	9725	21-9
1224-2	15-5	9251	3-4	9726	13-2
1224-3	15-5	9301	7-18, 15-3, 15-8	9734	5-6
1270-1A	11-7	9308	5-9	9743	17-15
1270-2A	11-2	9318	21-12	9758	7-6
1325C	15	9338	3-10, 9-6, 11-12	9761	11-5
1440	15-10	9340	9-17	9765	21-2
1442	17-11	9347	23-5	9784	23-10
1475	19-4	9361	7-13	9786	23-6
1492	9-14	9373	17-6	9795	23-21
1554	19-27	9380	11-11	9800	19-21
1569	23-1	9384	5-7	9801	7-7, 9-8, 23-24
1570	23-4	9386	3-32	9802	5-15, 11-3, 21-11, 23-18
1588	23-15	9390	3-24	9807	9-7, 11-6
1589	23-16	9428	15-14	9809	3-23
1590	23-14	9432	3-38	9811	3-41, 5-5
1591	23-13	9438	5-8	9824	21-5
1592	23-12	9440	3-18	9826	3-15, 19-23
1593	23-11	9442	3-13	9828	23-8
1594	23-2	9460	9-3	9837	3-9, 9-1
1596	23-7	9462	19-2	9848	7-25
1597	23-3	9467	13-9	9853	3-35, 19-24
1714	15-1	9479	9-11	9900	9-7
1832	23	9500	15-12	9902	21-4
1837	23	9511	17-2	9904	3-8
1851	23	9517	15-20	9909	3-22
1874	23	9515	3-32	9910	19-20
1875	23	9522	3-31	9912	7-5, 9-9, 19-22 23-23
2475-1	11	9532	3-27, 9-22	9913	3-17, 5-2, 11-4, 13-21, 21-10
2475-2	11	9552	3-42, 5-19, 7-26, 19-6	9919	21-3
2527	5-3	9553	5-18	9925	23-17
2735	21-1				
9009	19-3				
9055	17-12				

Part No.	Page & Index No.	Part No.	Page & Index No.	Part No.	Page & Index No.
9935	17-8	20754	7-1	20918-01	11-9
9944	7-17, 15-7	20755	7-2	20918-02	11-10
9953	15-13	20757	17-14	20924	3-3A
9955	3-5A	20760	9-13	20925	5-17
9966	9-19	20765	7-15	20928	3-1
9973	3-39	20770	11-8	20932-01	21-6
10148	13	20775	5-16	20932-02	21-7
10360	15-4	20776	17-19	85030	13-5, 15-11
10802	11	20791	15-16	90038	5-4, 13-12
10813	13-21	20792	15-17	90044	7-4, 13-4
11361	19-7	20799	15-19	90045	9-28, 19-19
11513	13-6	20806	3-36	90070	3-40
11516	7	20808	3-28	94018	15-21
20506	9-26	20809	3-29	96509	19-12
20513	9-2	20818	7-29	96510	19-13
20514	7-27	20830	3-11	96512	19-1
20517-01	9-15	20831	3-33	96514	19-16
20517-02	9-16	20837	19-17	96520	19-11
20532	9-27	20838	9-24	97020	19-15
20535	17-7	20842	9-20	97073	13-11
20545	9-10	20861	5-1	97074	17-16
20546	9-23	20862	3-26	97075	7-10
20553	9-21	20863	3-25	97076	13-3
20555	7-21	20868	21	97077	7-19
20565	7-14	20873	13-13	97081B	7-9
20665	23-19	20879	17-10	97082B	7-9
20666	23-20	20880	15-9	97083	3-34
20673	7-3	20881	7-11	1901118	11
20694	13-7	20888	3-37	1908112	19-8
20695	13-18	20889	13-10	1908118	19-14
20703	3-5	20893	13-8	1900357	3-3
20711	17-5	20896	17-17	1900396	7-8
20712	17-9	20898	19-9	1900767	7-28
20718	15-2	20899	9-12	1900944	19-10
20751	9-18	20916	7-24	1900475010	3-6



TROY-BILT MANUFACTURING CO., 102nd Street and 9th Ave., Troy, New York 12180
For Technical Service, call Toll-Free: 1-800-833-6990 — For Parts, call Toll-Free: 1-800-648-6776

GARDEN WAY CANADA, INC., 1515 Matheson Blvd., Unit B11; Mississauga, Ontario L4W 2P5
(Local calls only (416 Area Code): 624-8423) • From Ontario & Quebec Provinces call Toll-Free: 1-800-387-3351
From Western Canada & Maritime Provinces call Toll-Free: 1-800-387-3316